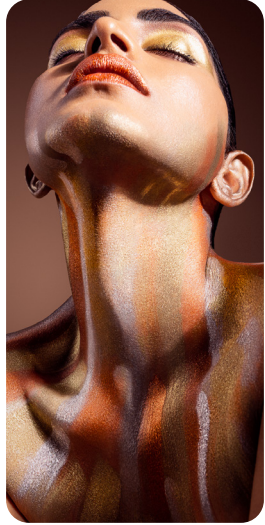
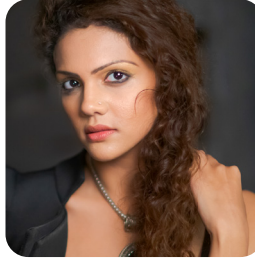


# Realize your vision with access to *Photography Studio & Equipment*



9, Prathamesh Park Society, Baner, Pune 411045  
84120 11220 | [sessions@sandeepkhade.com](mailto:sessions@sandeepkhade.com)

**SANDEEPKHADÉ**  
STUDIOS

## Studio Equipment & Features:

### Lights:

- Elinchrom Master RX600 Strobes x 2
- Elinchrom FRX400 Strobes x 2
- Elinchrom FRX200 Strobes x 2
- Elinchrom Master RX600 Strobes x 2 \*
- Godox QT1200III Strobe x 1 \*
- Godox AD600 Strobes x 2 \*
- Godox SL200 Continuous Lights x 2 \*
- Nanlite Forza 500 Continuous Light \*
- Nanlite Forza 60B Bi-color Light \*
- Nanlite Pavo30C RGB Tube Light x 2\*
- Aputure MC RGB Light x 4\*

### Stands:

- Heavy-duty Boom Stands x 2
- Wall-mount Boom x 1
- Floor Stands for Lights x 8
- Floor Stand for Foldable Reflector x 1
- Low Light Stand x 1
- C Stand with boom arm \*

### Utilities:

- Laptop height-adjustable trolley
- Blower
- Steam and Flat Irons
- Clothes Rack with Wheels
- Refrigerator
- Microwave Oven
- Water Filter
- Display stand trolley
- Air Conditioning \*
- Fog Machine \*

### 360° Studio Tour:

<http://bit.ly/SKSTour>

### Modifiers:

- Elinchrom 135cm Octa Softbox with Grid x 1
- Elinchrom 100cm Octa Softbox with Grid x 1
- Elinchrom 60x90 Strip Softbox x 2
- Elinchrom Square Softbox 66cm x 6
- Godox 35x160 Softbox with Grid x 2
- Godox P90H Parabolic Octa Softbox
- Square Softbox 80cm with Grid
- Square Softbox 40cm with Grid
- Beauty Dish 45cm x 1
- Bowl Reflectors x 7
- Barn-door x 3 with Grid x 2
- Snoots x 2
- Background Reflector x 1
- Gels (for Bowl Reflectors and Paper Gels)
- 5-in-1 Foldable Reflector 150x200mm
- 5-in-1 Foldable Reflector 42 inch
- Godox Parabolic Umbrella 165cm x 1 \*
- Godox Scrim Flag Kit - SF6090 x 1 \*
- Beauty Dish 70cm with Grid x 1 \*

### Backdrops:

- Paper Backdrops x 14
- Cloth Backdrops x 7
- Wallpaper Backdrops x 7 \*
- Painted Backdrops x 6 \*

### Clothing Items:

We offer various clothing items on rent for in-studio use.

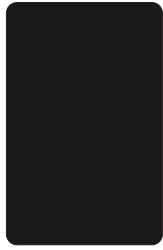


We have an inverter installed for backup in case of a power failure. This ensures worry-free shooting sessions at the studio.

\*These items are not part of any booking packages and will be available at an additional charge.

## Backdrop Options:

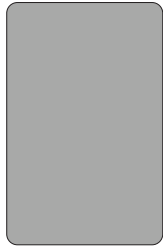
### Seamless Paper Backdrops:



Jet Black



Neutral Grey



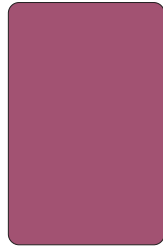
Light Grey



White



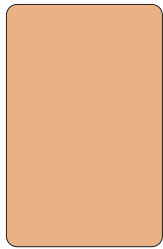
Scarlet



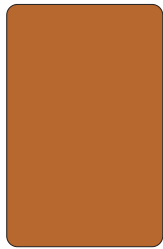
Plum



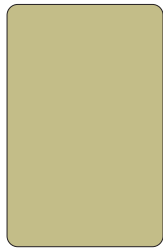
Pink



Pongee



Spice



Tropical Green



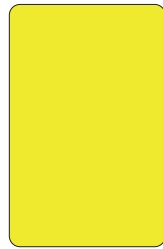
Mint



Alpine

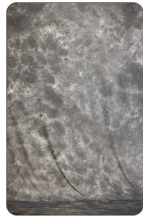


Cobalt



Aspen

### Cloth Backdrops:



Gray Cloudy (Dark)



Gray Cloudy (Light)



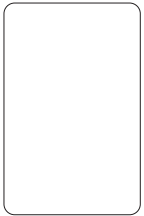
Brown



Maroon



Green



White



Black

### Wallpaper Backdrops (Optional):



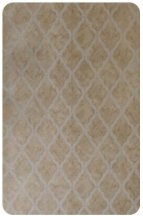
Floral



Luxe Dark



Beige Striped



Beige Motif



Gold Abstract



Silver Abstract

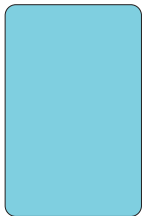


Lime Green

### Painted Backdrops (Optional):



Blue



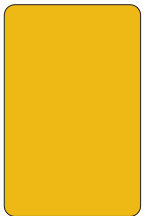
Light Blue



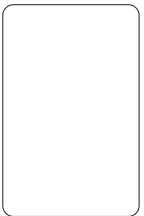
Dark Grey



Orange



Metallic Gold



White

## Pricing:

### Highlights:

- Main Shooting Area
- Makeup & Changing Room
- Extended Shooting Area with Dining Table
- Large well-maintained Garden Area
- One assistant for helping with lighting and grip equipment

### Lights & Grip Included:

- Elinchrom Master RX600 x 2
- Elinchrom FRX400 x 2
- Elinchrom FRX200 x 2
- 30 Light modifiers
- 13 Light stands

### Backdrops Included:

- Paper Backdrops x 14
- Cloth Backdrops x 7

## Operational Rules:

### Weekdays Studio Rental Terms and Conditions:

- The booking will be confirmed upon payment through our website.
- If the session goes overtime, an hourly rate will be applicable for the number of extended hours and cannot be applied with any other package (based on availability).
- Change of plan isn't a problem! We provide you with a refund depending on your time of cancellation.
  - More than 48 hours before the rental time start - 100% refund and reschedule option available
  - 0 to 48 hours before the rental time start - no refund or rescheduling possible

### Weekends Studio Rental Terms and Conditions:

- The booking will be confirmed upon payment through our website.
- Rescheduling or cancellation will not be possible for any bookings on Saturday and/or Sunday.

### General Terms & Conditions:

- Optional equipment rental will be charged at 30 minutes increments. Cost is per unit and excludes any applicable taxes. Bringing your continuous lights requiring a power supply is allowed at an additional cost. Contact us if you plan to bring any kind of lights and/or heavy equipment.
- CCTV cameras will remain operational at all times.
- Booking time starts at your reservation time, not at the time you or your team arrives. The studio will be available to you for any purpose 10 minutes before your start time.
- The time ends when you & your team vacate the studio area.
- You are expected to leave the studio in the same way you had received the studio upon arrival.
- The client is responsible for their own equipment. The studio will not be responsible for any missing/damaged items. We will not deliver/courier/ship any items left behind and will have to be collected. We have the right to dispose of any such items after 15 days of the rental date.
- Any perishable items left behind will be disposed off immediately.
- The client would be solely responsible for any damages that occur during the session and will be charged at actuals. This includes flooring, furniture walls, equipment, and other amenities within the studio premises.
- The studio assistants will only be available and responsible for helping with studio-owned lighting and grip equipment.
- Use of any liquid, powder, spray paint, color bombs, etc. is strictly prohibited within studio premises.
- No refunds or rescheduling will be possible due to any power outages.

### Location:

- Prathamesh Park, Baner, Pune 411045
- Voice/Text/WhatsApp: 84120 11220
- info@sandeepkhade.com
- Instagram: @exposurecraft | @2sandeepkhadestudios
- Website: exposurecraft.com